

Rett Syndrome Research Trust, Inc.

Financial Statements

December 31, 2025

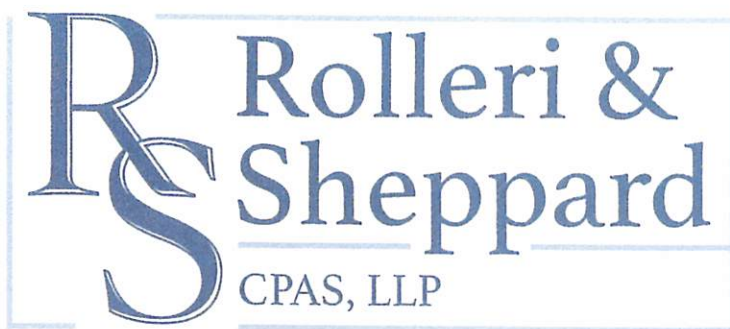


**RETT
SYNDROME
RESEARCH
TRUST**

Rett Syndrome Research Trust, Inc.
December 31, 2025

Table of Contents

	<u>Page</u>
Report of Independent Auditor	1
<u>Financial Statements:</u>	
Statements of Financial Position	3
Statements of Activities	4
Statements of Functional Expenses	5
Statements of Cash Flows	7
Notes to Financial Statements	8
<u>Supplemental Statements:</u>	
Functional Expense Allocation and Research Funded Expense Graphs	15
Research Awards and Grant Commitments and Payments Schedule	16



Rolleri & Sheppard CPAS, LLP
Ryan C. Sheppard, CPA, CFF, Managing Partner
John M. Rolleri, CPA, CFE, Senior Partner
Jayme L. White, CPA, Partner

REPORT OF INDEPENDENT AUDITOR

To the Board of Trustees of
Rett Syndrome Research Trust, Inc.

Opinion

We have audited the accompanying financial statements of Rett Syndrome Research Trust, Inc. (a nonprofit organization), which comprise the statements of financial position as of December 31, 2025 and 2024, and the related statements of activities, functional expenses and cash flows for the years then ended, and the related notes to the financial statements.

In our opinion, the financial statements referred to above present fairly, in all material respects, the financial position of Rett Syndrome Research Trust, Inc. as of December 31, 2025 and 2024, and the changes in its net assets and its cash flows for the years then ended in accordance with accounting principles generally accepted in the United States of America.

Basis for Opinion

We conducted our audits in accordance with auditing standards generally accepted in the United States of America. Our responsibilities under those standards are further described in the Auditor's Responsibilities for the Audit of the Financial Statements section of our report. We are required to be independent of Rett Syndrome Research Trust, Inc. and to meet our other ethical responsibilities in accordance with the relevant ethical requirements relating to our audits. We believe that the audit evidence we have obtained is sufficient and appropriate to provide a basis for our audit opinion.

Responsibilities of Management for the Financial Statements

Management is responsible for the preparation and fair presentation of the financial statements in accordance with accounting principles generally accepted in the United States of America, and for the design, implementation, and maintenance of internal control relevant to the preparation and fair presentation of financial statements that are free from material misstatement, whether due to fraud or error.

In preparing the financial statements, management is required to evaluate whether there are conditions or events, considered in the aggregate, that raise substantial doubt about Rett Syndrome Research Trust, Inc.'s ability to continue as a going concern within one year after the date that the financial statements are available to be issued.

Auditor's Responsibilities for the Audit of the Financial Statements

Our objectives are to obtain reasonable assurance about whether the financial statements as a whole are free from material misstatement, whether due to fraud or error, and to issue an auditor's report that includes our opinion. Reasonable assurance is a high level of assurance but is not absolute assurance and therefore is not a guarantee that an audit conducted in accordance with generally accepted auditing standards will always detect a material misstatement when it exists. The risk of not detecting a material misstatement resulting from fraud is higher than

for one resulting from error, as fraud may involve collusion, forgery, intentional omissions, misrepresentations, or the override of internal control. Misstatements, including omissions, are considered material if there is a substantial likelihood that, individually or in the aggregate, they would influence the judgment made by a reasonable user based on the financial statements.

In performing an audit in accordance with generally accepted auditing standards, we:

- Exercise professional judgment and maintain professional skepticism throughout the audit.
- Identify and assess the risks of material misstatement of the financial statements, whether due to fraud or error, and design and perform audit procedures responsive to those risks. Such procedures include examining, on a test basis, evidence regarding the amounts and disclosures in the financial statements.
- Obtain an understanding of internal control relevant to the audit in order to design audit procedures that are appropriate in the circumstances, but not for the purpose of expressing an opinion on the effectiveness of Rett Syndrome Research Trust, Inc.'s internal control. Accordingly, no such opinion is expressed.
- Evaluate the appropriateness of accounting policies used and the reasonableness of significant accounting estimates made by management, as well as evaluate the overall presentation of the financial statements.
- Conclude whether, in our judgment, there are conditions or events, considered in the aggregate, that raise substantial doubt about Rett Syndrome Research Trust, Inc.'s ability to continue as a going concern for a reasonable period of time.

We are required to communicate with those charged with governance regarding, among other matters, the planned scope and timing of the audit, significant audit findings, and certain internal control related matters that we identified during the audit.

Supplementary Information

Our audits were conducted for the purpose of forming an opinion on the financial statements as a whole. The Supplemental Statements of Functional Expense Allocation and Research Funded Expense Graphs, and the Research Awards and Grant Commitments and Payments Schedule is presented for purposes of additional analysis and is not a required part of the financial statements. Such information is the responsibility of management and was derived from and relates directly to the underlying accounting and other records used to prepare the financial statements. The information has been subjected to the auditing procedures applied in the audit of the financial statements and certain additional procedures, including comparing and reconciling such information directly to the underlying accounting and other records used to prepare the financial statements or to the financial statements themselves, and other additional procedures in accordance with auditing standards generally accepted in the United States of America. In our opinion, the information is fairly stated in all material respects in relation to the financial statements as a whole.

Rolleri & Sheppard CPAS, LLP

Rolleri & Sheppard CPAS, LLP
Fairfield, Connecticut
April 21, 2026

Rett Syndrome Research Trust, Inc.
Statements of Financial Position
December 31, 2025 and 2024

	<u>2025</u>	<u>2024</u>
<u>ASSETS</u>		
Current assets		
Cash and cash equivalents	\$ 16,298,854	\$ 17,999,520
Promises to give	1,992,661	1,218,539
Other receivable	32,867	98,281
Prepaid assets	15,200	34,551
Other current assets	-	7,274
Total current assets	18,339,582	19,358,165
Other assets		
Promises to give	494,400	998,414
Intangible assets	2,000,000	-
Total other assets	2,494,400	998,414
 Total assets	 \$ 20,833,982	 \$ 20,356,579
<u>LIABILITIES AND NET ASSETS</u>		
Current liabilities		
Accounts payable	\$ 6,416	\$ 86,750
Grants payable	11,411,390	7,891,231
Accrued expenses	17,000	16,500
Total current liabilities	11,434,806	7,994,481
Other liabilities		
Grants payable	2,240,067	5,642,021
Total other liabilities	13,674,873	13,636,502
Net assets without donor restrictions		
Undesignated	7,159,109	6,720,077
Total net assets	7,159,109	6,720,077
 Total liabilities and net assets	 \$ 20,833,982	 \$ 20,356,579

See report of independent auditor and notes to financial statements.

Rett Syndrome Research Trust, Inc.
Statements of Activities
For the Years Ended December 31, 2025 and 2024

	<u>2025</u>	<u>2024</u>
Public support and revenues		
Contributions	\$ 7,514,450	\$ 8,204,650
The MECP2 Duplication Syndrome Fund	149,701	225,807
Licensing	130,688	156,372
Biorepository	64,767	22,164
Donated materials	264,583	248,716
Donated services and rent	9,500	9,500
Interest income	543,463	446,592
Realized gains from sales of donated securities	1,229	3,008
Unrealized losses	-	(1,078)
Total public support and revenues	8,678,381	9,315,731
Expenses		
Program services	7,367,305	8,822,119
Supporting services:		
Management and general	154,105	197,028
Fundraising	717,939	712,318
Total expenses	8,239,349	9,731,465
Increase (decrease) in net assets from operations	439,032	(415,734)
Net assets - beginning of year	6,720,077	7,135,811
Net assets - end of year	\$ 7,159,109	\$ 6,720,077

See report of independent auditor and notes to financial statements.

Rett Syndrome Research Trust, Inc.
Statement of Functional Expenses
For the Year Ended December 31, 2025

	<u>Program</u>	<u>Supporting Services</u>		<u>Total Expenses</u>
		<u>Management and General</u>	<u>Fundraising</u>	
Awards and grants	\$ 5,375,683	\$ -	\$ -	\$ 5,375,683
Bank and credit card fees	12,893	2,128	3,184	18,205
Bookkeeping	-	438	-	438
Employee benefits	50,645	8,357	12,507	71,509
Fundraising	-	-	472,980	472,980
Insurance	1,920	1,919	1,919	5,758
Miscellaneous	107,115	106	8,229	115,450
Office and supplies	16,226	2,679	4,006	22,911
Payroll taxes	50,835	8,389	12,554	71,778
Postage and shipping	6,931	1,144	1,712	9,787
Printing and publication	161	-	12	173
Professional fees (*)	599,107	5,956	16,672	621,735
Rent (**)	3,187	526	787	4,500
Research costs	129,157	-	-	129,157
Salaries	739,673	122,060	182,666	1,044,399
Scientific meetings	262,582	-	-	262,582
Telephone	2,433	402	601	3,436
Travel - scientific meetings	7,330	-	-	7,330
Website and hosting	1,427	1	110	1,538
	<u>\$ 7,367,305</u>	<u>\$ 154,105</u>	<u>\$ 717,939</u>	<u>\$ 8,239,349</u>

(*) Includes \$5,000 of donated services.

(**) Includes \$4,500 donated rent.

See report of independent auditor and notes to financial statements.

Rett Syndrome Research Trust, Inc.
Statement of Functional Expenses
For the Year Ended December 31, 2024

	<u>Program</u>	<u>Supporting Services</u>		<u>Total Expenses</u>
		<u>Management and General</u>	<u>Fundraising</u>	
Awards and grants	\$ 7,350,537	\$ -	\$ -	\$ 7,350,537
Bad debt	31,440	8	1,692	33,140
Bank and credit card fees	6,579	1,086	1,625	9,290
Bookkeeping	-	660	-	660
Employee benefits	42,927	7,084	10,601	60,612
Fundraising	-	-	447,893	447,893
Insurance	2,489	2,488	2,488	7,465
Miscellaneous	83,954	400	4,138	88,492
Office and supplies	6,642	1,097	1,640	9,379
Payroll taxes	51,144	8,440	12,630	72,214
Postage and shipping	4,714	778	1,164	6,656
Printing and publication	920	5	45	970
Professional fees (*)	375,983	46,164	35,611	457,758
Rent (**)	3,187	526	787	4,500
Research costs	46,602	-	-	46,602
Salaries	775,529	127,977	191,520	1,095,026
Scientific meetings	30,655	-	-	30,655
Telephone	1,895	313	468	2,676
Travel - scientific meetings	6,596	-	-	6,596
Website and hosting	326	2	16	344
	<u>\$ 8,822,119</u>	<u>\$ 197,028</u>	<u>\$ 712,318</u>	<u>\$ 9,731,465</u>

(*) Includes \$5,000 of donated services.

(**) Includes \$4,500 donated rent.

See report of independent auditor and notes to financial statements.

Rett Syndrome Research Trust, Inc.
Statements of Cash Flows
For the Years Ended December 31, 2025 and 2024

	<u>2025</u>	<u>2024</u>
Cash flows from (used in) operating activities		
Increase (decrease) in net assets	\$ 439,032	\$ (415,734)
Adjustments to reconcile increase (decrease) in net assets to cash from (used in) operating activities		
Increase in promises to give	(270,108)	(1,156,688)
Decrease in other receivable	65,414	-
(Increase) decrease in prepaid assets	19,351	(3,488)
(Increase) decrease in other current assets	7,274	(7,274)
Increase (decrease) in accounts payable	(80,334)	66,125
Increase in accrued expenses	500	2,000
Increase in grants payable	118,205	2,247,105
Net cash provided from operating activities	<u>299,335</u>	<u>732,046</u>
Cash flows from (used in) investing activities		
Payment for licensing agreement	(2,000,000)	-
Proceeds from sales of investments	-	1,078
Net cash used by investing activities	<u>(2,000,000)</u>	<u>1,078</u>
Increase in cash	<u>(1,700,665)</u>	<u>733,124</u>
Cash and cash equivalents - beginning of year	<u>17,999,520</u>	<u>17,266,396</u>
Cash and cash equivalents - end of year	<u><u>\$ 16,298,854</u></u>	<u><u>\$ 17,999,520</u></u>

See report of independent auditor and notes to financial statements.

Rett Syndrome Research Trust, Inc.
Notes to Financial Statements
December 31, 2025
(See Report of Independent Auditor)

NOTE 1 – ORGANIZATION

Rett Syndrome Research Trust, Inc. (the “Organization”) is a not-for-profit organization formed under Internal Revenue Code 501(c)(3). The Organization is focused on the development of treatments and cures for Rett Syndrome and related *MECP2* disorders. The Organization funds research projects and organizes and sponsors scientific workshops. Equally important, the Organization brings to the scientific community a deep knowledge of the disease and access to intellectual capital. It provides a comprehensive view of the field and a focus on translational efforts.

NOTE 2 – CORRECTION OF AN ERROR

The Organization discovered an error on the December 31, 2024 financial statements and they have been restated to reflect the correction. During 2024 the Organization committed to fund the purchase of a license agreement (Note 8). The Organization presented the commitment as a grant expense. In 2025 the Organization ascertained that an error in recording was made upon payment of the commitment and they determined that it was a capitalizable asset and had to be presented in accordance with the terms of the agreement. For the year ended December 31, 2024 net assets were increased by \$2,000,000.

NOTE 3 – SIGNIFICANT ACCOUNTING POLICIES

Basis of Accounting and Presentation

The financial statements of the Organization have been prepared in accordance with generally accepted accounting principles in the United States of America (GAAP). Accordingly, the accounts of the Organization are reported by net asset category. Net assets, revenues, gains, and losses are classified based on the existence or absence of donor or grantor-imposed restrictions. Accordingly, net assets and changes therein are classified and reported as follows:

Net Assets Without Donor Restrictions – Net assets available for use in general operations and not subject to donor (or certain grantor) restrictions.

Net Assets With Donor Restrictions – Net assets subject to donor (or certain grantor) imposed restrictions. Some donor-imposed restrictions are temporary in nature, such as those that will be met by the passage of time or other events specified by the donor. Other donor-imposed restrictions are perpetual in nature, where the donor stipulates that resources be maintained in perpetuity. The Organization reports contributions restricted by donors as increase in net assets without donor restriction if the restrictions expire (that is, when stipulated time restriction ends or purpose restriction is accomplished) in the reporting period in which the revenue is recognized. All other donor-restricted contributions are reported as increases in net assets with donor restrictions, depending on the nature of the restrictions. When a restriction expires, net assets with donor restrictions are reclassified to net asset without donor restrictions and reported in the statements of activities as net assets released from restrictions.

Rett Syndrome Research Trust, Inc.
Notes to Financial Statements
December 31, 2025
(See Report of Independent Auditor)

Use of Estimates

The preparation of financial statements in conformity with GAAP requires management to make estimates and assumptions that affect the reported amounts of assets and liabilities, the disclosure of contingent assets and liabilities as of the date of the financial statements, and the reported amounts of revenues and expenses during the reporting period. Significant estimates include, but are not limited to, the useful lives of long-lived assets, the allocation of functional expenses, and the discount rates applied to long-term promises to give and long-term grants payable. Actual results may differ from those estimates.

Cash and Cash Equivalents

For purposes of the statement of cash flows, the Organization considers all highly liquid debt instruments with original maturities of three months or less to be cash equivalents. The Organization maintains cash balances at multiple financial institutions in the State of Connecticut. These balances are insured by the Federal Deposit Insurance Corporation (FDIC) up to \$250,000 per institution. As of December 31, 2025, the Organization's cash balances exceeded FDIC insurance limits by \$28,842.

Promise to Give and Allowance for Uncollectable Accounts

Promises to give are recorded as contributions when pledged and are stated at their estimated net realizable value. Promises to give are presented net of an allowance for doubtful accounts and, if expected to be collected in more than one year, are also discounted to present value using a risk-free adjusted discount rate. The allowance is based on historical collection experience, as well as management's evaluation of other relevant factors.

Revenue Recognition and Contributions (ASC 606 and ASC 958):

The Organization recognizes revenue from exchange transactions in accordance with FASB ASC Topic 606, *Revenue from Contracts with Customers*, which outlines a five-step framework to reflect the transfer of goods or services in exchange for consideration. Revenues from non-contribution sources are insignificant in the aggregate. Additional information regarding significant revenue concentrations is disclosed in *Note 9 – Revenue Concentrations*.

The Organization applies the guidance under FASB ASC Topic 958, *Not-for-Profit Entities*, to determine whether a transaction qualifies as a contribution (nonreciprocal) or an exchange transaction (reciprocal), and whether a contribution is conditional. Contributions, including unconditional promises to give, are recognized when cash, securities, other assets, or notification of a beneficial interest is received. These contributions are recorded as revenue in the period received and are presented at net realizable value. Conditional contributions — those that include a measurable performance or other barrier and a right of return — are not recognized until the conditions are substantially met.

In-Kind Contributions

The Organization receives significant in-kind contributions, including volunteer time and pro bono services, primarily in connection with special events and fundraising activities. Donated services are recognized as contributions if they either create or enhance nonfinancial assets or require specialized skills, are provided by individuals possessing those skills, and would otherwise need to be purchased by the Organization.

In-kind contributions are recorded as both revenue and expense at estimated fair value at the time of donation. Donated auction items received for fundraising events are recorded at their gross

Rett Syndrome Research Trust, Inc.
Notes to Financial Statements
December 31, 2025
(See Report of Independent Auditor)

selling price when sold.

Donated Securities

Donated publicly traded securities are recorded at their fair market value on the date of donation. Fair market value is determined using the closing market price of the security on the date the Organization gains control, which is typically the date the securities are received. These contributions are recognized as revenue in the period received. For the year ended December 31, 2025, all donated securities were unrestricted and available for general use.

Property and Equipment

Property and equipment are recorded at cost and depreciated over a useful life of three years using the straight-line method. All assets were fully depreciated as of December 31, 2025 and 2024.

Functional Expenses

The Organization allocates expenses on a functional basis among program and supporting services. Expenses that are directly attributable to a specific function are charged accordingly based on their natural classification. Shared expenses are allocated among functions based on management's estimates of usage or benefit received.

Direct fundraising expenses totaled \$472,980 and \$447,893 for the years ended December 31, 2025 and 2024, respectively.

NOTE 4 – LIQUIDITY AND AVAILABILITY

Financial assets available for general expenditure, meaning those without donor or other restrictions limiting their use within one year of the statement of financial position date, are as follows:

Cash and cash equivalents	\$ 16,298,854
Promises to give	<u>1,992,661</u>
	<u>\$ 18,291,515</u>

The Organization has committed significant resources to research grants due within one year of the statement of financial position date. To meet these commitments, the Organization relies on the collection of promises to give due within one year, along with ongoing fundraising efforts to secure additional funds.

As part of its liquidity management plan, the Organization invests cash in excess of daily requirements in short-term investments and money market funds.

Rett Syndrome Research Trust, Inc.
Notes to Financial Statements
December 31, 2025
(See Report of Independent Auditor)

NOTE 5 – FAIR VALUE MEASUREMENTS

The Organization follows the fair value measurement guidance under ASC 820, which prioritizes the inputs used in valuation techniques to measure fair value. The fair value hierarchy consists of three levels:

- **Level 1:** Unadjusted quoted prices in active markets for identical assets or liabilities accessible to the Organization.
- **Level 2:** Observable inputs other than quoted prices included in Level 1, such as quoted prices for similar assets in active or inactive markets, or inputs corroborated by observable market data.
- **Level 3:** Unobservable inputs significant to the fair value measurement, requiring significant judgment.

The Organization determines fair value based on assumptions that market participants would use in pricing an asset or liability in the most advantageous market. The fair value measurement approach is influenced by factors such as the investment type, market liquidity, and whether observable market data is available. Level 3 measurements, which rely on unobservable inputs, involve greater judgment due to the inherent uncertainty of valuation.

Valuation Methodologies

- **Promises to Give:** Valued based on discounted cash flows, adjusted by an allowance for collectability.

There have been no changes in valuation methodologies as of December 31, 2025.

The following table summarizes changes in the fair value of the Organization’s Level 3 assets for the years ended December 31, 2025 and 2024:

	Promises to Give	
	2025	2024
Balance - beginning of year	\$ 2,276,015	\$ 1,066,119
New promises to give	1,702,393	2,294,648
Collections and adjustments	<u>(1,459,607)</u>	<u>(1,084,752)</u>
Balance - end of year	<u>\$ 2,518,801</u>	<u>\$ 2,276,015</u>

NOTE 6 – INCOME TAXES

The Organization is exempt from federal income tax under Section 501(c)(3) of the Internal Revenue Code and is generally exempt from state income taxes as well. Accordingly, no provision for federal or state income taxes has been recorded in the accompanying financial statements.

Rett Syndrome Research Trust, Inc.
Notes to Financial Statements
December 31, 2025
(See Report of Independent Auditor)

Management has evaluated the Organization's tax positions and concluded that there are no uncertain tax positions requiring recognition or disclosure. The Organization's informational returns (Forms 990) remain subject to examination by federal and state taxing authorities for three years from the date of filing.

NOTE 7 – PROMISES TO GIVE

At December 31, 2025 and 2024, the Organization had unconditional promises to give totaling \$2,518,801 and \$2,276,015 respectively. Promises expected to be collected in more than one year are discounted at an annual rate of 4%, which management considers to be a reasonable estimate of the risk-free rate of return.

The expected timing of collections is as follows:

	<u>2025</u>	<u>2024</u>
Within one year	\$ 2,003,801	\$ 1,229,679
One to five years	515,000	1,046,336
More than five years	-	-
Subtotal	<u>2,518,801</u>	<u>2,276,015</u>
Less: present value component	(20,600)	(47,922)
Less: allowance for doubtful accounts	<u>(11,140)</u>	<u>(11,140)</u>
Promises to give, net	<u><u>\$ 2,487,061</u></u>	<u><u>\$ 2,216,953</u></u>

All promises to give are valued using Level 3 inputs, as described in Note 4, due to the use of unobservable inputs and management's judgment in assessing collectability and timing.

NOTE 8 – INTANGIBLE ASSETS

The Organization made a \$2,000,000 payment to acquire gene therapy rights under a licensing arrangement. The agreement does not specify a contractual term, and based on management's evaluation of the relevant economic, legal, regulatory, and competitive factors, the Organization has determined that the license has an indefinite useful life. Accordingly, the cost of the license has been capitalized as an intangible asset and is not subject to amortization.

In accordance with ASC 350, intangible assets with indefinite useful lives are tested for impairment annually, or more frequently if events or changes in circumstances indicate that the asset may be impaired. The Organization performs its annual impairment assessment as of December 31. The impairment analysis compares the fair value of the licensing asset to its carrying value. If the carrying value exceeds fair value, an impairment loss is recognized in the period identified.

For the year ended December 31, 2025, the Organization performed its impairment assessment and concluded that no impairment existed.

Rett Syndrome Research Trust, Inc.
Notes to Financial Statements
December 31, 2025
(See Report of Independent Auditor)

NOTE 9 – GRANTS PAYABLE

As of December 31, 2025 and 2024, the Organization had committed to unconditional promises to give totaling \$13,744,793 and \$15,768,336, respectively, to various research organizations over the next several years. Commitments expected to be paid in more than one year are discounted at an annual rate of 4%, which management considers to be a reasonable estimate of the risk-free rate of return.

Future funding of these committed grants is predicated upon anticipated fundraising activities and the continued availability of financial resources.

The expected timing of grant payments is as follows:

	<u>2025</u>	<u>2024</u>
Within one year	\$ 11,411,390	\$ 7,891,231
One to five years	2,333,403	5,877,105
More than five years	-	-
Subtotal	13,744,793	13,768,336
Less: present value component	(93,336)	(235,084)
Grants payable, net	<u>\$ 13,651,457</u>	<u>\$ 13,533,252</u>

NOTE 10 – DONATED SERVICES AND IN-KIND CONTRIBUTIONS

The Organization received the following contributions of nonfinancial assets for the years ending December 31, 2025 and 2024:

	<u>2025</u>	<u>2024</u>
Auction and raffle items	\$ 264,583	\$ 248,716
In-kind services	9,500	9,500
	<u>\$ 274,083</u>	<u>\$ 258,216</u>

NOTE 11– REVENUE CONCENTRATIONS

For the year ended 2025, the Organization received a significant portion of its total revenue from several individual donors. While the Organization is actively working to diversify its funding sources, it remains reliant on these donors to support a meaningful portion of its activities. A reduction or loss of this support could have a noticeable impact on operations and financial results.

Other sources of income — including revenue from biorepository storage fees, patient data license agreements, and donated materials and services — each accounted for less than 10% of total revenue and are not considered individually significant.

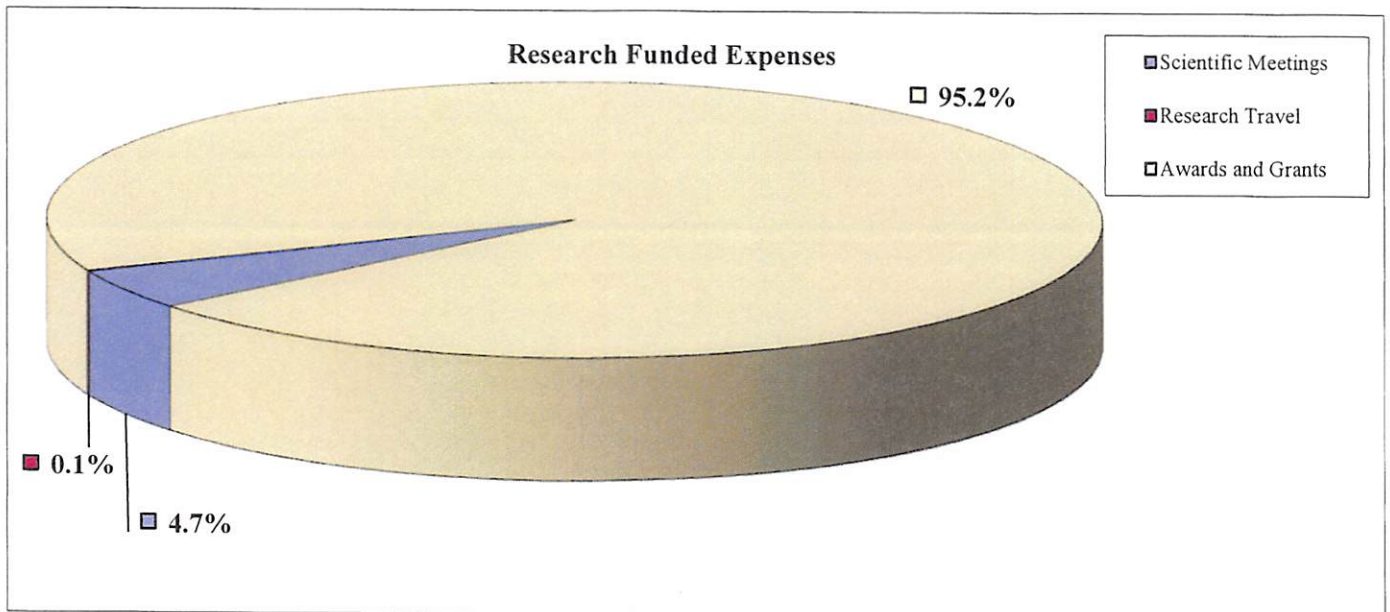
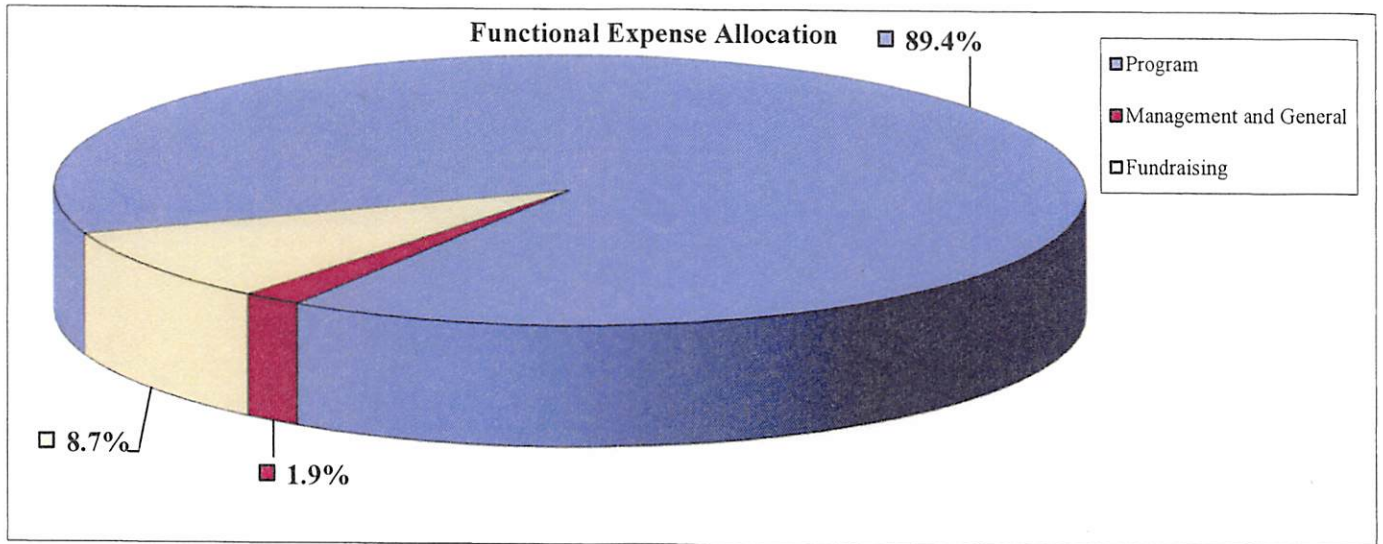
Rett Syndrome Research Trust, Inc.
Notes to Financial Statements
December 31, 2025
(See Report of Independent Auditor)

The Organization remains focused on monitoring revenue sources and is committed to strengthening long-term financial sustainability through continued fundraising and partnership development.

NOTE 12 – SUBSEQUENT EVENTS

The Organization has evaluated events and transactions occurring subsequent to December 31, 2025 through April 21, 2026, the date the financial statements were available to be issued, in accordance with FASB ASC 855, *Subsequent Events*. Management has determined that there are no subsequent events requiring disclosure or adjustment to the financial statements.

Rett Syndrome Research Trust, Inc.
Supplemental Statement - Functional Expense Allocation and
Research Funded Expense Graphs
For the Year Ended December 31, 2025



See report of independent auditor

Rett Syndrome Research Trust, Inc.
Supplemental Statement - Research Awards and Grant Commitments and Payments Schedule
For the Year Ended December 31, 2025

	<u>Commitment at</u> <u>December 31, 2024</u>	<u>Additional</u> <u>Commitments</u>	<u>Payments Against</u> <u>Commitments</u>	<u>Commitment at</u> <u>December 31, 2025</u>
University of Edinburgh, Adrian Bird	\$ 210,334	\$ -	\$ (105,168)	\$ 105,166
UC Davis, Peter Beal	49,705	-	(49,705)	-
UC Davis, Kyle Fink	97,555	205,647	(48,776)	254,426
UC Davis, Kyle Fink (Epic Bio)	-	269,247	-	269,247
MIT, Guoping Feng	2,489,824	-	(1,244,912)	1,244,912
Emory University, Victor Faundez	726,084	-	(384,989)	341,095
Caltech, Michael Elowitz	250,000	-	-	250,000
UMASS, Sontheimer, Watts, Wolfe	1,562,059	84,791	(628,170)	1,018,680
UMASS, Han Zhang	194,732	-	(97,006)	97,726
NYU, Orrin Devinsky	19,766	-	-	19,766
NYU, Jef Boeke	161,753	-	(121,314)	40,439
Yale, Jiangbing Zhou (Feng)	490,978	-	(196,198)	294,780
Yale, Jiangbing Zhou (Liu)	548,306	-	(263,526)	284,780
Columbia, Shawn Liu (Zhou)	476,241	-	(238,122)	238,119
Brigham and Women's, Omar Abudayayeh	643,004	-	(321,495)	321,509
Beth Israel, Jonathan Gootenberg	214,997	-	-	214,997
UC Berkeley, Kai Chen (Jennifer Doudna lab)	1,158,523	-	(348,032)	810,491
Pre-clinical Studies	-	1,100,000	-	1,100,000
Jackson Labs (Kumar)	201,482	-	(129,490)	71,992
Jackson Labs (T158M)	-	219,317	(38,531)	180,786
Jackson Labs / Senti	-	200,000	-	200,000
Jackson Labs	33,209	-	-	33,209
Jackson Labs (Khvorova)	14,869	-	-	14,869
ProQR	2,650,000	-	-	2,650,000
Profluent	-	1,000,000	(250,000)	750,000
Couragene	45,000	15,000	(60,000)	-
Resplice	-	130,000	(50,000)	80,000
Viralgen	-	750,000	-	750,000
4basebio	-	350,000	-	350,000

See report of independent auditor

Rett Syndrome Research Trust, Inc.
Supplemental Statement - Research Awards and Grant Commitments and Payments Schedule
For the Year Ended December 31, 2025

	<u>Commitment at December 31, 2024</u>	<u>Additional Commitments</u>	<u>Payments Against Commitments</u>	<u>Commitment at December 31, 2025</u>
Shape Therapeutics	-	300,000	-	300,000
Senti Bio	-	50,000	-	50,000
Evox	-	240,000	-	240,000
Duke, Bryce Reeve	-	213,610	-	213,610
Montefiore Children's Hospital, Sasha Jacobs	-	40,123	(40,123)	-
Ketamine Trial	265,798	-	(100,000)	165,798
Rett Syndrome Global Registry	-	110,490	(110,490)	-
OMBD Consortium	539,538	-	(154,286)	385,252
RSRT Biorepository	-	123,762	(123,762)	-
Citizen Health	296,000	-	-	296,000
Emerald 2	428,580	-	(321,435)	107,145
Vivalink	-	8,741	(8,741)	-
	<u>\$ 13,768,336</u>	<u>\$ 5,410,728</u>	<u>\$ (5,434,271)</u>	<u>\$ 13,744,793</u>

See report of independent auditor